

LIFE ADVICLIM “Final Meeting”

29th January 2020

NADAPTA THE CLIMA PROJECT




LIFE-IP NAdapta-CC Project

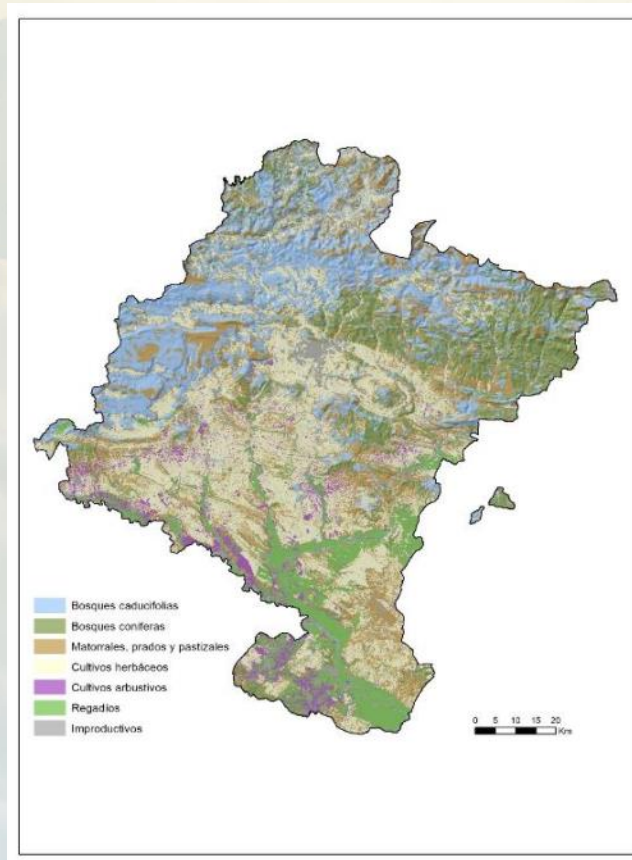
Towards an integrated, coherent and inclusive
implementation of Climate Change Adaptation policy in
a region: Navarra

www.lifenadapta.eu

[video](#)

The main objective is to increase the resilience against Climate Change of Navarra

-  Location at the confluence of three biogeographical areas
-  Oceanic, mountain and continental-Mediterranean climates
-  Great biological diversity and landscape mosaic





- N** Integrated LIFE project with an strategic vision: to implement a climate change adaptation strategy in a region
- N** To support the full implementation of the Climate Change Roadmap of Navarra 2017-2030-2050 (HCCN-KLINA).
 - Funds mobilization to develop complementary measures: target >370 M€ (ERDF, AEFRD, H2020, national, regional and private funds).
 - Inclusion of Climate Change in all policies of the Government of Navarra

N Duration: 8 years
2/10/2017 - 31/12/2025

N Budget: 15,6 M€



9,5M€ EU

N Coordinated by: **Nafarroako Gobernua**  **Gobierno de Navarra**



N Project partners:

Nafarroako
Igarurumen
Kudeaketa, S.A.

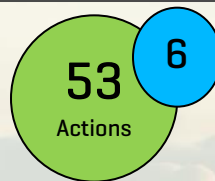
Gestión
Ambiental de
Navarra, S.A.

INTIA

Nasuvinsa
Navarra de Suelo y Vivienda, S.A.

NILSA

upna
Universidad Pública de Navarra
Naturales y Ambientales (UPNA)



Focus Areas



CC MONITORING

Increase the knowledge of climate change impacts in Navarra to adopt adaptation measures



WATER

- Plans and alert systems against drought and flood risks
- Urban sustainable drainage systems
- River space recovery projects



FORESTRY

Adaptive management measures in the most vulnerable areas to preserve the ecological value and improve productivity of forests



AGRICULTURE

Innovative techniques for soil, plagues, vegetal material and irrigation water management. Silvopastoral management.



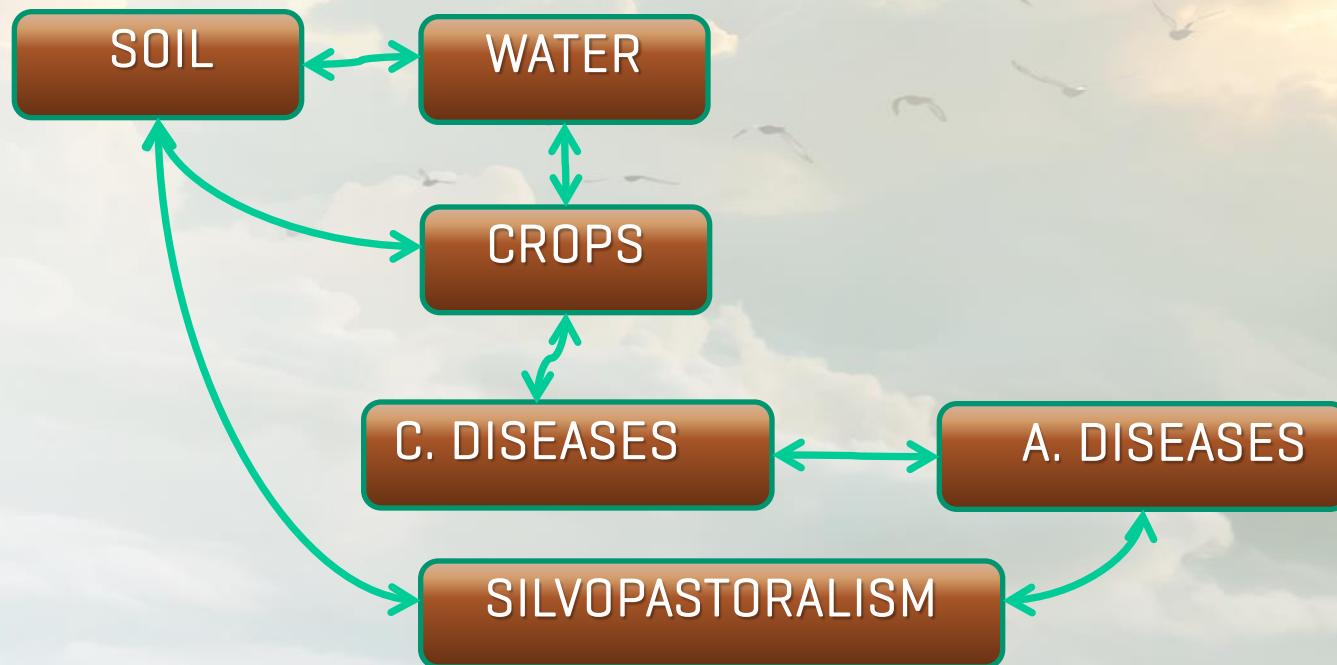
HEALTH

Surveillance systems of climate change consequences on human health and protection measures against new risks



INFRASTRUCTURES AND TERRITORIAL PLANNING

Energetic regeneration and adaptation in the urban and rural environments. Vulnerability analysis of infrastructures and landscape.




SOILS: Agrosystems' adaptability to CC. Organic matter, crops and soils management strategies

1- Agricultural soil diagnosis, zoning and resilience indicators

2- Good practices demonstration to improve soils resilience

3- Actions in real plots

- 
1. External organic matter management
 2. Crops diversification and rotation
 3. Conservative agricultural practices



WATER: Adaptation in water management on the agricultural sector

- 1- Adaptation and improvement of irrigation infrastructures
- 2- Crops, varieties and cycles
- 3- Regulated deficit irrigation demonstrations
- 4- Collective system of automatic management of plot traceability
- 5- webGIS AGROgestor Water Platform



VEGETAL MATERIAL:

Climate change adaptation of vegetal material



Demonstrative trials:

- CC adaptation
- Water use efficiency
- Tolerance to stress situations

Decision making support tool

Biodiversity conservation through local varieties of high natural value

WARNING STATION: Emerging pests and diseases

Incorporation of predictive models of emerging plagues and diseases and their vectors in agriculture and livestock

Development of a new decision making support tool in IPM



SILVOPASTORALISM: Pastures management, livestock and fight against fires

Silvopastoral management in Sabaiza state to reduce combustible biomass:

- Management of pasture-forest patches
- Instalation of livestock infrastructures
- Creation of pastures exclusion areas and identification of fire risk
- Experiences follow-up and identification of good practices



¡GRACIAS!

THANK YOU!